



Growing Mid Wales Structure Chart and Overview

Who's who within Growing Mid Wales

December 2024

Contents

Page

[Growing Mid Wales Organisation Chart](#)

3

[Growing Mid Wales Board \(Joint Committee\)](#)

4

[Growing Mid Wales Partnership](#)

6

[Mid Wales Corporate Joint Committee & Governance Structure](#)

7

[Mid Wales Transportation](#)

9

[Regional Skills Partnership](#)

10

[Economic Advisory Group](#)


11

Organisation Chart



Tyfu
Canolbarth Cymru
Growing
Mid Wales

Growth Deal Portfolio Management Office

 Cathy Martin
Operations Manager


 Dave Owen
Digital
Programme Manager

 John Collingwood
Sites & Premises
Programme Manager

 Peter Jones
Projects and
Performance Manager

 Stacey-Jayne Oakham
Portfolio Analysis &
Support Officer

 Amy Waters
Senior Service
Support Officer

 Carwyn Jones-Evans
Joint Strategic Lead


 Nicola Williams
Joint Strategic Lead

 Huw Williams
Regional
Energy Officer

 Natalie Chambers
UK SPF
Regional Manager

 Ann Elias
Regional Transport
Lead

 Angharad Massow
Senior
Communications Officer

 Barbara Green
Project Support Officer


 Julie Williams
CJC Programme
Support Officer


Mid Wales Regional Skills Partnership

 David Price
Regional Skills
Partnership Manager

 Teresa Peel-Jones
Employer Engagement
Officer

 Louise Grove-White
Project Officer

 Arinola Ogundeji
Project
Support Officer

 Lily Else
Project
Support Officer

Growing Mid Wales Board (Joint Committee)

Role: The Growing Mid Wales Board is the Joint Committee between Ceredigion County Council and Powys County Council constituted by an inter-authority agreement. The Board is the sponsoring group and decision-making body for the Mid Wales Growth Deal and responsible for the overall Vision for Growing Mid Wales providing leadership, vision and strategic direction.

The Board oversees the development, implementation and delivery of the Growth Deal Portfolio including consideration of Programme and Project Business Cases with overall accountability to ensure that the Portfolio objectives are met.

Vision: "For Mid Wales to be an enterprising and distinctive region delivering economic growth driven by innovation, skills, connectivity and more productive jobs supporting prosperous and bilingual communities."

Growing Mid Wales Board (Joint Committee) members



Joint Chair
Councillor Bryan Davies
Leader
Ceredigion County Council



Joint Chair
Councillor James Gibson-Watt
Leader
Powys County Council



Eifion Evans
Chief Executive
Ceredigion County Council



Emma Palmer
Chief Executive
Powys County Council



Councillor Beverley Baynham
Powys County Council



Councillor Catrin M S Davies
Cabinet Member for Culture, Leisure and Customer
Services Ceredigion County Council



Councillor Clive Davies
Cabinet Member for Economy and
Regeneration
Ceredigion County Council



Councillor Matthew Dorrance
Deputy Leader
Cabinet Member for a Fairer Powys
Powys County Council



Councillor Keith Henson
Cabinet Member for Highways
and Environmental Services
and Carbon Management
Ceredigion County Council



**Councillor Corinna
Kenyon-Wade**
Powys County Council



Councillor David Selby Cabinet
Member for a More
Prosperous Powys
Powys County Council



Councillor Matthew Vaux
Cabinet Member for Partnerships, Housing,
Legal and Governance
and Public Protection
Ceredigion County Council

Growing Mid Wales Partnership

Role: This is an advisory body, that comprises key stakeholders from across the private, public, and voluntary sector in Mid Wales, to inform, challenge and advise on the Growth Deal, and to provide regional leadership of the wider Vision for Growing Mid Wales

Members:

The following organisations are represented on the Partnership:

1872 PRIFYSGOL ABERYSTWYTH UNIVERSITY

FUW UNDEB AMAETHWYR CYMRU

fsb

NFU CYMRU

Regional Learning and Skills Partnership
Partneriaeth Dysgu a Sgiliau Rhanbarthol
South West & Mid Wales
De-Orllewin a Canolbarth Cymru

TraCC
Trafnidiaeth Canolbarth Cymru
Mid Wales Transportation

Cymdeithas Mudiadau Gwirfoddol Ceredigion
CAVO Ceredigion Association of Voluntary Organisations

GIG CYMRU NHS WALES
Bwrdd Iechyd Prifysgol Hywel Dda
University Health Board

GRŴP COLEGAU NPTC GROUP OF COLLEGES

UK Government Llywodraeth y DU

Cyngor Sir CEREDIGION County Council

MWMSG Mid Wales Manufacturing Group
Grŵp Gweithgynhyrchu Canolbarth Cymru

Powys

Prifysgol Cymru Y Drindod Dewi Sant
University of Wales Trinity Saint David

colegceredigion

MWT Cymru

PAVO
Powys Association of Voluntary Organisations
Cymdeithas Mudiadau Gwirfoddol Powys

Llywodraeth Cymru
Welsh Government

Mid Wales Corporate Joint Committee

Growing Mid Wales has been the brand for our work in partnership across Ceredigion and Powys. Since the establishment of the Mid Wales Growth Deal and our Regional Skills Partnership, to our portfolio of activity on Energy and the UK Shared Prosperity Fund. The Mid Wales Corporate Joint Committee has responsibility for Strategic Development, Strategic Transport and Economic Wellbeing. We are exploring opportunities and options in partnership with both Governments to determine suitable arrangements moving forward.

Formally constituted in January 2022, the Corporate Joint Committee for Mid Wales covers the local authority areas of Ceredigion and Powys, and Bannau Brycheiniog for strategic development planning. The Mid Wales Corporate Joint Committee (MWCJC) is one of four established across Wales by the Welsh Government.

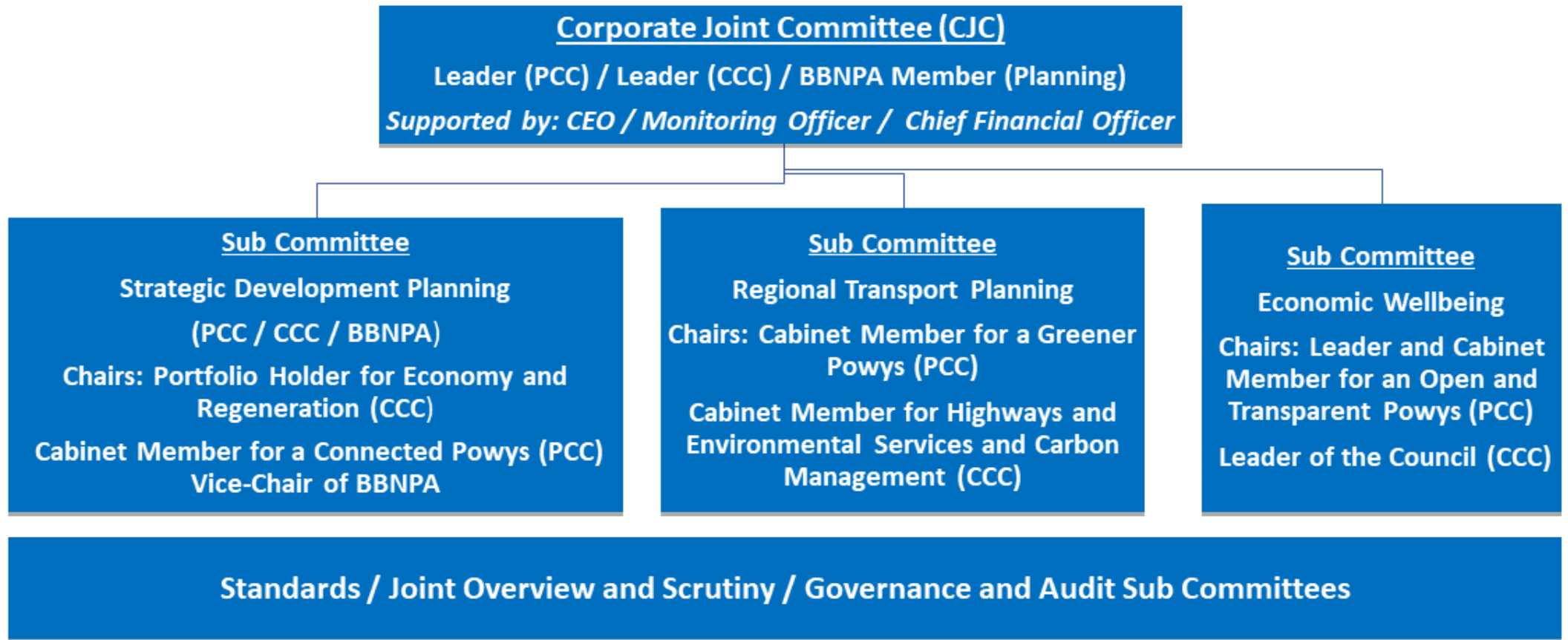
Role: This initiative aims to enhance local democracy and accountability by integrating decision-making processes in three critical areas: Regional Transport Planning, Strategic Development Planning, and Economic Wellbeing.

- **Members:** The Leader of Ceredigion County Council, the Leader of Powys County Council, the Vice-Chair of the Bannau Brycheiniog National Park (involved in matters relating specifically to strategic planning), Senior representatives from the above organisations, Chief Executive Officers (CEO's), Monitoring Officer, and Chief Financial Officer (Section 151).



Cyd-Bwyllgor Corfforedig y Canolbarth

Mid Wales Corporate Joint Committee



Mid Wales Transportation Team

Role:

The Mid Wales Transportation area, previously known as TraCC, comprises the central area of Wales from the English border in the east to the Welsh coast in the west and encompasses the local authorities of Powys and Ceredigion. The area also includes part of the Bannau Brycheiniog National Park.

From 1st April 2024, Mid Wales Transportation planning is the responsibility of the Mid Wales Corporate Joint Committee.



Cyngor Sir
CEREDIGION
County Council



Mid Wales Regional Skills Partnership Board

Role:

The RSP is an advisory panel which works across the private and public sectors with business leaders, stakeholders and partners across the region to understand the skills provision and labour market needs, in order to drive investment that meets the requirements of both employers and workforce. The RSP bridges the gap between education and regeneration to create a strong and vibrant economy underpinned by innovation, growth and a capable workforce.

Members:

Industry leaders from the following sectors: Advanced Manufacturing & Engineering (Applied Research & Innovation), Construction & Energy, Agriculture, Tourism & Leisure, Health & Social Care, Transport & Logistics, Food & Drink, Digital and the Public Sector. The following organisations are represented on the Partnership :



Economic Advisory Group

As part of the development of the Mid Wales Growth Deal, an Economic Advisory Group has been established comprising business leaders with expertise relevant to the Mid Wales region.

Role: Their role is to provide a business voice on the Growth Deal to the GMW Board and positively promote the Growth Deal within the Mid Wales Business Community.

Economic Advisory Group



Susan Balsom



Meilyr Ceredig



Kristian Hicks



Douglas Hughes



Steve Lesbirel
EAG Chair



Walter May



Bronwen Raine



Rik Sellwood